



TOMAX
NEWS

Issue 173
18th October 2024



PLUS:

MARKET SUMMARY

- Rates on the China to Australia tradelane have softened slightly during October so far, but lines are gearing themselves to push for increases to rates to apply again from 1st November. South East Asia to Australia rates remain extremely high due to severe congestion on the tradelane and we are still seeing large delays via transshipment ports for some cargo.
- The Tomax Live portal has received some further enhancements over the last few weeks. If you have not yet been introduced to the new portal (launched in April this year) then please speak to one

of our friendly Tomax team members to get a demonstration. Live vessel updates are one of the many benefits of tracking your cargo via Tomax Live.

- Warehousing space update: The Tomax Brisbane warehouse remains at capacity, with very little space available, whilst both the Melbourne and Perth warehouses do have space available to cater for your needs. Email us via warehouse@tomax.com.au if you need help with any warehousing, storage or distribution needs!

TARIFF CONCESSIONS GAZETTE (TC)

Tariff Concession Orders (TCOs) are an Australian Government revenue concession that exists where there are no known Australian manufacturers of goods that are substitutable for imported goods. The weekly Tomax Client Newsletter will contain a link to the latest Gazette document so that you can stay updated.

[CLICK TO VIEW LATEST GAZETTE](#)





INLAND RAIL INVESTS \$100 MILLION IN REGIONAL VICTORIA

On October 17, Inland Rail announced that its expenditure with local businesses for the Beveridge to Albury (B2A) section has surpassed \$100 million. This initiative has provided a significant economic boost to regional communities in Victoria. Since October 2022, Inland Rail and its partner, McConnell Dowell, have invested \$118 million with 303 local suppliers for work at the first four construction sites.

The project has also created substantial employment opportunities for local residents, with 1,279 out of 1,330 jobs—approximately 96%—filled by locals. Inland Rail noted that Victorian businesses are already securing contracts for the second phase of the B2A project, with 22 local firms winning contracts totaling nearly \$1 million and employing 156 local workers.

The project will establish a new intermodal terminal in Beveridge, connecting it first to Narromine, New South Wales, by 2027, and eventually to Kagaru in Queensland.

In Victoria, work will take place at 12 sites between Beveridge and Albury, facilitating double-stacked freight trains and enhancing

the reliability of everyday product deliveries across the nation. Ed Walker, Inland Rail's delivery director for B2A, emphasised the importance of local suppliers, citing their local knowledge and expertise as essential to the project's success.

“We are determined to see local and First Nations businesses win contracts on the Inland Rail project and maximise the economic benefit in communities along the alignment,” Mr Walker said, “we’re investing in regional Victorian communities and the capabilities of local businesses...More communities and businesses are set to benefit when we roll out the second tranche of the project in Benalla, Euroa, Wandong, Hume Freeway – Tallarook & Seymour and Broadford.”

This initiative is designed to enhance resilience and productivity in the supply chain across major Australian cities, including Brisbane, Sydney, and Melbourne. Recently, the Illabo to Stockinbingal section received approval from the New South Wales government, marking another step forward in the project's development.

Murday, H. (2024). Inland Rail announces \$100 million regional boost. Retrieved from <https://www.thedcn.com.au/region/australia/inland-rail-announces-100-million-regional-boost/> on 17th October, 2024.



NEW ICS2 REGULATIONS BEGIN NEXT MONTH

The European Union's Import Control System 2 (ICS2) Release 3 will launch on November 13, as announced by shipping lines following approval from customs authorities. The ICS2 regulations will apply to all deep-sea and short-sea cargo that is discharging, transshipping, or transiting through the 27 EU member states, Northern Ireland, Norway, and Switzerland. This includes cargo that will remain on board (FROB - Freight Remaining On Board). The new regulations aim to enhance customs risk management and improve safety and security for goods entering or transiting the EU.

To comply with these regulations, shippers must file Shipping Instructions (SI) that include mandatory ICS2 data before the cut-off period to avoid container rollovers.

Key mandatory data elements for the Entry Summary Declaration (ENS) include:

- 6-digit Harmonised System (HS) code for each commodity
- Complete and accurate cargo description
- CUS code for harmless and dangerous goods, if included in the European Customs Inventory of Chemical Substances (ECICS)
- Unique Consignment Reference (UCR), if issued by the customer
- Full address and EORI number of all involved parties, as assigned by European customs

Filing Options

Shipping lines will offer two filing options:

- **Single Filing:** For import cargo discharging in the EU (excluding FROB), shippers can provide the complete information of the buyer and seller, including their EORI numbers. House Bills of Lading information can also be submitted.
- **Multiple Filings:** Shippers can provide the EORI number of a supplementary declarant who will perform a partial filing.

The deployment window for House filers runs from December 4, 2024, to April 1, 2025. Until then, shipping lines will proceed with partial filings and may impose fees for this service.

Important Compliance Policy

Shipping lines will receive a Movement Reference Number (MRN) for each Bill of Lading as acknowledgment from customs after filing the ENS. To ensure compliance, shipping lines will enforce a "NO MRN, NO LOAD" policy for deep-sea voyages, requiring ENS submission 24 hours before loading. For short-sea voyages, the ENS must be submitted at least 2 hours before the vessel arrives at an EU port.

Submission Channels

Shipping lines will update its eCommerce channels to support ICS2 data submissions and will provide detailed guidelines soon. More information on ICS2 Release 3 can be found on the [European Commission's website](#).

Crisp, D. (2024). Exporters to Europe: prepare for new regs. Retrieved from <https://www.thedcn.com.au/subscriber-content/exporters-to-europe-prepare-for-new-regs/> on 17th October, 2024.



NEW VESSEL, ALEXANDRA MAERSK, OFFICIALLY LAUNCHES

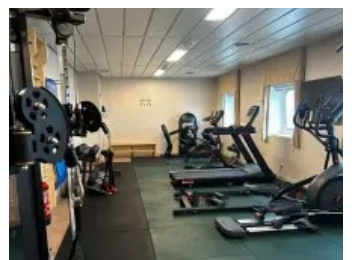
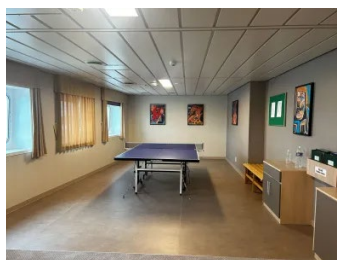
AP Moller-Maersk has officially launched its latest dual-fuel methanol vessel, Alexandra Maersk, at Felixstowe, the busiest container port in the UK. This vessel will be utilised on a service route between Asia and Europe.

Alexandra Maersk is the sixth ship in Maersk's fleet equipped to operate on methanol in both its main and auxiliary engines. It is also the fifth vessel in a series of 18 large dual-fuel methanol ships scheduled for delivery over the next two years, each capable of carrying over 16,000 TEU. The vessel was named after Alexandra Mærsk-Møller (1868-1953), the sister of AP Møller, the company's founder.

Onboard the vessel, its amenities include a swimming pool, gym, recreation room, and cinema. These facilities were built to make extended trips away from home much more enjoyable for the seafarers, especially with the challenging conditions at sea.

The new methanol-powered ships reduce greenhouse gas emissions by 65-90% compared to traditional fossil fuels, depending on the methanol's feedstock and production process, as evaluated on a lifecycle basis.

Maersk C.E.O, Vincent Clerc, highlighted the need for the International Maritime Organisation's support in closing the price gap between green and fossil fuels to encourage greener choices in the industry. He noted, "last week's IMO meeting on that matter was a step in the right direction, but much work remains in the coming months. We remain hopeful and continue to do all in our power to progress the green transition of shipping."



Goldstone, C. (2024). Maersk names latest dual-fuel methanol vessel Alexandra Maersk. Retrieved from <https://theloadstar.com/photo-blog-maersk-names-latest-dual-fuel-methanol-vessel-alexandra-maersk/> on 16th October, 2024.



AIR CARGO RATES SOAR TO 2023 HIGHS

Air cargo spot rates have surged to their highest levels of the year, despite the recent Golden Week holiday in China. According to WorldACD, tonnage from the Asia Pacific region dropped by 7% in the week leading up to October 6. However, global spot rates increased by 1%, reaching \$2.84 per kilogram.

Rates in the Asia Pacific rose by 1%, while Africa saw a 2% increase, and Central and South America reported a 5% rise. Additionally, contract rates from the Asia Pacific grew by 2%.

Vietnam has emerged as a key market, attracting significant attention from carriers. A spokesperson for Qatar Airways Cargo noted a substantial demand for e-commerce from Asia, highlighting increased capacity in markets such as India, China, and Vietnam. They see a great potential in China, India, and Vietnam due to the booming e-commerce sector.

Lufthansa Cargo also emphasised Vietnam's importance in its winter schedule, launching a new weekly flight connecting Frankfurt, Ho Chi Minh City, and Los Angeles using a 777F aircraft. "This marks our first direct link from the Asian market to our U.S. network, and we're excited about the opportunities it

presents for global trade and logistics," the carrier added.

Vietnam's air cargo market is attracting considerable attention. Capacity from Ho Chi Minh City to North America experienced a remarkable 359% year-on-year growth last week, with an 86% increase in the previous month. However, year-to-date capacity is down 22.1% compared to 2023.

In contrast, capacity from Ho Chi Minh to Europe rose by 30% last week and is up 11% for the year so far.

Despite the increase in capacity, rates are also climbing. For the week ending October 7, rates from Vietnam to the U.S. increased by 65.4% year-on-year, reaching \$6.38, with a 3.2% rise week-on-week. Rates to Europe also rose to \$4.44, up 3.3% week-on-week and 57.5% year-on-year.

The spokesperson for Qatar Airways Cargo commented that profitable and high-demand routes were essential to their business and noted seeing a positive trend in bookings for the remainder of the year.

Lennane, A. (2024). Air cargo spot rates hit 2024 peak, while Vietnam becomes a hotspot. Retrieved from <https://theloadstar.com/air-cargo-spot-rates-hit-2024-peak-while-vietnam-becomes-a-hotspot/> on 16th October, 2024.

STAFF SPOTLIGHT

ASHLEIGH MOLLOY

CUSTOMS BROKER

TOMAX LOGISTICS AUSTRALIA

What is your role at Tomax?

Customs Broker.

Name your hobbies and interests?

Gym, cooking and art.

Are there any goals you wish to achieve?

I am currently on a 12-week challenge to lose 5kg.

Describe yourself in 3 words?

Lovely, creative and compassionate.

What song gets you on the dance floor?

Thriller – Michael Jackson.

If you could have any magical power, what would it be and why?

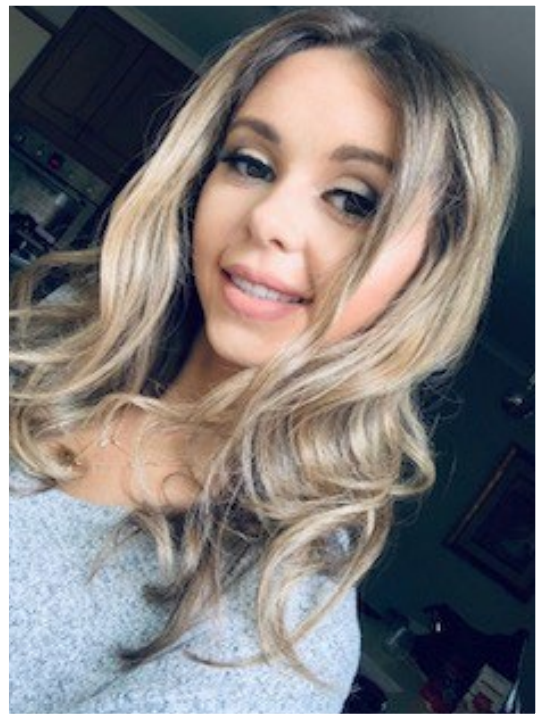
To predict the future

Next travel destination on your bucket list?

Hawaii

Your go-to restaurant in Melbourne?

Hola Mexico Karingal Hub



FRIDAY FUNNIES

Happy Friday! We hope the following jokes put a smile on your face!

A Mexican magician says he will disappear on the count of 3. He says “Uno, dos...” poof.
He disappeared without a tres.

What do you call Batman and Robin after a steamroller went over them?
Flatman and Ribbon.

I told my boss that three companies were after me and I needed a raise....
My boss asked me, “which companies?”
I replied, “gas, water and electricity.”

My friend Phillip had his lip removed last week.
Now we just call him Phil.

What do you call a haunted chicken?
A poultry-geist.

Where can you get chicken broth in bulk?
The stock market.

A HR employee was quizzing a new employee on the company’s safety manual.
“What steps do you take in case of a fire?” she asked.
The new employee replied, “quick ones.”

What is a can opener that doesn’t work?
A can’t opener!

My friends think I’m a magician when I make chocolate disappear..
But little do they know, I’ve got a few Twix up my sleeve...

Have you heard the rumour about butter?
Never mind, I shouldn’t be spreading it.

“Where do you want this big roll of bubble wrap?” I asked my boss.
“Just pop it in the corner,” he said.
Took me three hours...



Australian HQ
19/202 Ferntree Gully Rd
Clayton VIC 3168

tomax.com.au
1300 186 629
03 9544 4227

